

OIL-EX[®] The elastomer solution for a
clean environment

Sustainable environmental protection for transport and industrial areas

ABSORBED SAFELY AND EFFICIENT

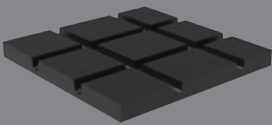
PROTECTING THE ENVIRONMENT WITH CALENBERG

The OIL-EX® Absorption Mat provides effective and reliable protection against harmful lubricants and other substances. Supplied as standard roll or cut to size - simply lay out - done!

Easy handling with maximum protection and long service life.

OIL
EX

CHARACTERISTICS



- Absorption effect independent of weather and temperature
- Short absorption time
- Full pedestrian access and restricted vehicular access
- Absorbed media cannot be extruded or flushed out
- Can be used on unpaved surfaces
- Easy handling (installation, cutting to size)
- Suitable for mobile use
- Shock absorbing effect
- Noise and thermal insulation
- High proportion of recycled raw material
- Long service life



Environmental protection measures

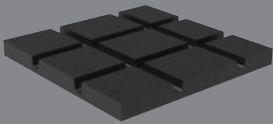
Due to its special material matrix, the OIL-EX® absorption mat prevents leaks of hazardous substances such as oil or other hydrocarbon compounds.

OIL-EX® consists of elastomeric materials, an absorption layer of bound pelleted rubber and a high proportion of recycled material. An impermeable barrier layer on the underside of the mat prevents contamination of the substrate. OIL-EX® absorbs liquid hydrocarbons such as oils, low-viscosity lubricants, fuels and organic solvents and selectively binds the hydrocarbons from emulsions. The liquids are distributed on the surface of the mat by the shaping of the absorption layer and are subsequently bound in the material matrix. The absorbed liquids remain in the mat and cannot be squeezed or rinsed out. Surface water, however, is not bound and drains off. Drainage is facilitated by longitudinal and transverse profile grooves. As a result of the absorption of the materials, the mat material swells and consequently reduces the width of the grooves. If the absorption capacity of the mat is exhausted, this is indicated by completely 'closed' grooves.

Protection of the substrate in a wide range of applications

OIL-EX® protects the substrate from contact with harmful substances. The mat is suitable for mobile and stationary use wherever uncontrolled oil losses and leaks can occur. It is recommended to use the mat in mechanical engineering, equipment and vehicle construction areas, e.g. for maintenance, repair and cleaning purposes. Outside use on unpaved surfaces has also proven to be particularly effective.

FIELDS OF APPLICATION



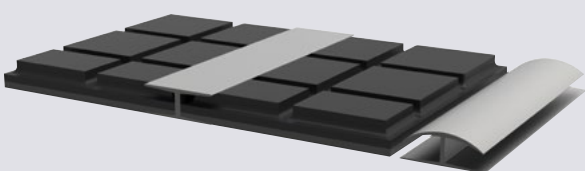
- Maintenance and parking areas for road and rail vehicles
- Storage and temporary storage for machines
- Protection of hydraulic equipment
- Storage and transport securing of hydrocarbon-filled drums, tanks and containers
- Filling stations
- Loading areas etc.

TECHNICAL DATA

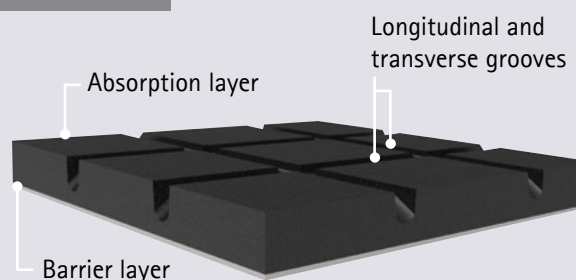
■ Absorption capacity	approx. 10 litre / m ²
■ Thickness	20 mm
■ Weight	16 kg / m ²
■ Width	1480 mm
■ Length	up to 50 m

JOINT CONNECTION

Mat ends can be connected by a special rubber profile if required.



DESIGN





Am Knübel 2 - 4
31020 Salzhemmendorf | Germany

Tel. + 49 51 53 - 94 00-0
Fax + 49 51 53 - 94 00-49

info@calenberg-ingenieure.de
www.calenberg-ingenieure.de

A LISEGA Group Company



The contents of this publication are the result of many years of research and experience gained in the application of this technology.

All information is given in good faith; it does not represent a guarantee with respect to characteristics and does not exempt the user from testing the suitability of products and from ascertaining that the industrial property rights of third parties are not violated. No liability whatsoever will be accepted for damage – regardless of its nature and its legal basis – arising from advice given in this publication.

We reserve the right to make technical modifications in the course of product development.